

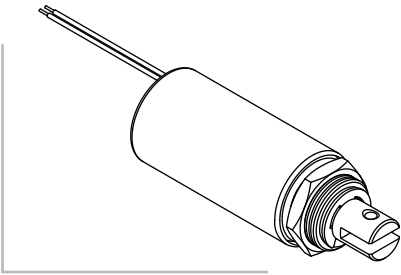


SH-T2551

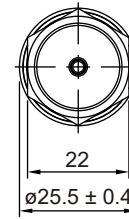
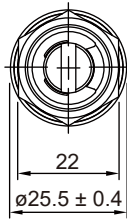
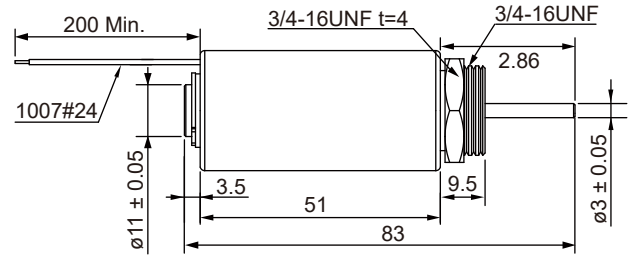
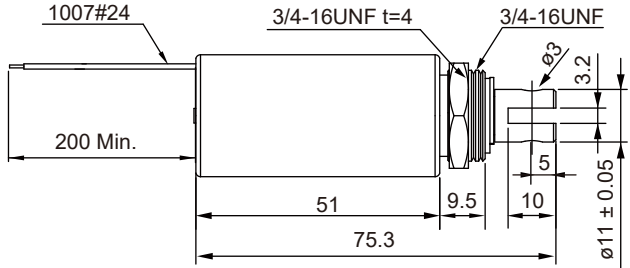
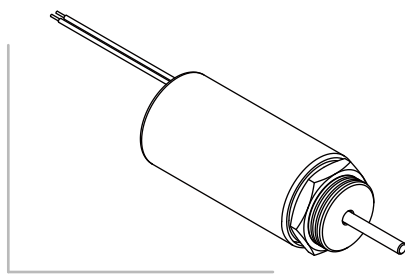
Tubular Solenoid

Unit : mm
Shown energized

PULL TYPE

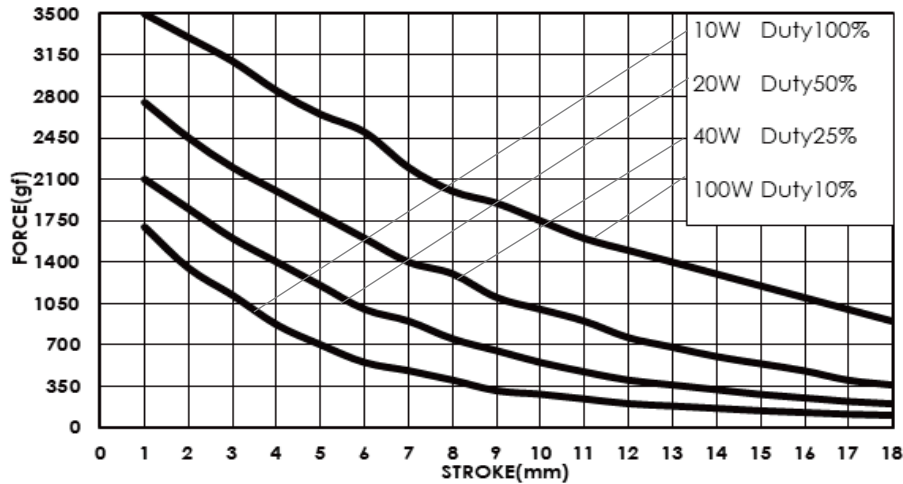


PUSH TYPE



Total Weight : 178g

DATA FORCE



COIL DATA

Duty cycle(%)	$= \frac{\text{"ON" time}}{\text{"ON" time} + \text{"OFF" time}} \times 100\%$	Continuous (100%)	Intermittent (50%)	Intermittent (25%)	Intermittent (10%)
Watts at 20°C		10	20	40	100
MAX. "ON" time in seconds		∞	360	32	8
Type no.	Resistance(20°C)±10%	DC Volts			
SH-T2551S/L-06V	3.6	6	8.5	12	19
SH-T2551S/L-12V	14.4	12	17	24	38
SH-T2551S/L-24V	57.6	24	34	48	76
SH-T2551S/L-48V	230.4	48	68	96	152